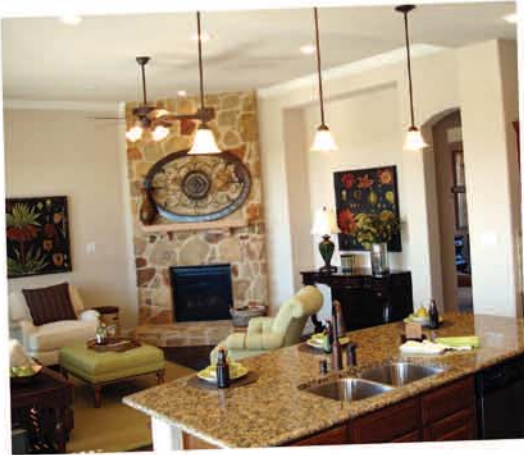
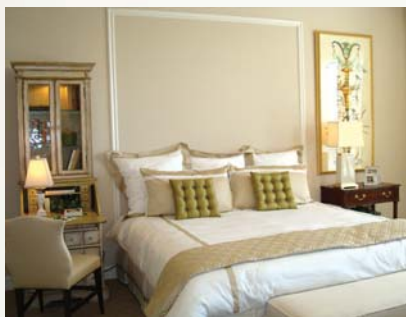


**Centex**<sup>®</sup>

# SUNCREST AT FLOWER MOUND



**Unparalleled Convenience and Luxury in Desirable Flower Mound —  
with Prices Starting in the \$280s**



- All new collection of luxury home designs featuring 2,200–4,300 square feet
- Highly-desirable Flower Mound location
- All homes include Centex Energy Advantage<sup>®</sup> program
- 3-car garage option available
- Industry-leading two-year fit & finish warranty program
- Small, intimate community with above-average sized homesites
- Highly acclaimed school district
- Convenient location close to first class shopping, sporting facilities, entertainment & business centers

**CALL MARK ELFENBEIN AT 214-632-2285 TODAY.  
Model & Sales Center COMING SOON.**

**Centex.com**



*Traveling north on I-35E, take exit 452 (FM 1171, Main Street). Go west on FM 1171 approximately 7/10 of a mile to Valley Parkway and turn right (north). Travel 2.2 miles on Valley Parkway to Suncrest.*